

## About Copper Beech

*An acre of lush gardens surround this picturesque and historic estate built in 1860 by James Waters. Waters, a pioneer nurseryman of Watsonville, exported the first strawberries out of Pajaro Valley to San Francisco. In 1897 William Weeks, a legendary local architect, provided additional add-ons further enhancing Copper Beech's charm. Mr. Waters planted a variety of rare trees and beautiful vegetation which serve as a destination for many migratory birds. The property has remained their sanctuary for over a century.*



*Copper Beech is available for weddings, receptions, and events. For more information, please visit [www.copperbeechgardens.com](http://www.copperbeechgardens.com) or call 831 763-0701*

## Copper Beech 336 East Lake Avenue Watsonville, CA 95076

### Directions from Santa Cruz:

- Take Highway 1 South
- Merge onto Main St./Hwy-152 toward Watsonville/Gilroy
- Turn Left onto E. Beach St./Hwy-152 East
- Turn Left onto Lincoln St./Hwy-152
- Turn Right onto E. Lake Ave./Hwy-152
- 336 E. Lake Ave. is on the right hand side, and will be marked with red, white and blue balloons!

### Parking

Parking inside Copper Beech, and street parking directly outside is limited. Please carpool where possible.

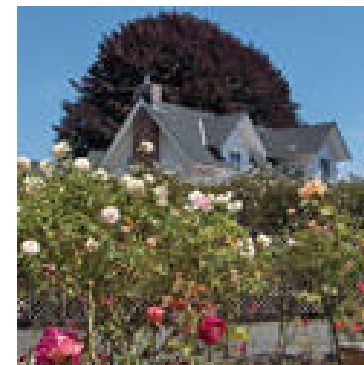
Please watch for our parking guide who will direct you to the closest parking space.

## British Women's International Group

Contact: Lesley MacDonald  
Phone: 831-458-1774  
Email: [lesleym@spxdata.com](mailto:lesleym@spxdata.com)

## A British Garden Party in Special Honor of Mothers and Daughters

Saturday, May 13, 2006  
2:00 - 5:00 p.m.  
Copper Beech  
Watsonville



Proceeds to benefit  
Global Fund for Women

British Women's  
International Group

## A British Garden Party

You are cordially invited to an afternoon garden party in celebration of mothers and daughters, set in the beautiful, historic, Copper Beech estate in Watsonville.

Tea, soft drinks, and a variety of British home-made sandwiches and baked goods will be served.

Recommended Donation of \$25 per person—*please make checks payable to The Global Fund for Women*

RSVP to \_\_\_\_\_



Raffle items donated by Maria Negre—  
Watercolor Artist, Azure Skin Care, and  
British Club Members

## British Women's International Group

The British Women's International Group is a Santa Cruz County-based women's group, sharing a common bond of British heritage, friendship and respect, and a commitment to help raise awareness and funds for critical women's causes around the world.



For more information, contact:

Lesley MacDonald

Phone: 831-458-1774

Email: [lesleym@spxdata.com](mailto:lesleym@spxdata.com)

## Global Fund for Women

British Women's International Group is proud to support the Global Fund for Women.

The Global Fund for Women is the largest foundation in the world that focuses exclusively on advancing women's rights internationally.

For more information, visit <http://www.globalfundforwomen.org/>



British Women's  
International Group

Contact: Lesley MacDonald  
Phone: 831-458-1774  
Email: [lesleym@spxdata.com](mailto:lesleym@spxdata.com)